

Summary of COBALI's Eurasian Watermilfoil study in Lac Brochet and Lac Poisson Blanc

(Study carried out August 13 & 14, 2019)

General Project Objectives

The Association contacted COBALI to have a study carried out in Lac Brochet and Lac Poisson Blanc (Bowman and the Newton Bay sectors) to confirm the presence of Eurasian Watermilfoil as well as to map its locations.

Lac Brochet

While no Eurasian Watermilfoil was detected in Lac Brochet, a variety of other aquatic plants were. The “Big 5” are:

- watershield (*Brasenia schreberi*)
- yellow pond-lily (*Nuphar variegatum*)
- American whitewater lily (*Nymphaea odorata*)
- Largeleaf pondweed (*Potamogeton amplifolius*)
- Broad-leaved pondweed (*Potamogeton natans*)

Several other types of plants were also found. For a detailed list, please see original French document, page 1.

Réservoir du Lac Poisson Blanc (Sectors checked were Bowman, Newton Bay and 'la baie Creuse')

Not only is the presence of Eurasian Watermilfoil confirmed, but so is the fact that it is thriving. Though the plant was not detected in every sector visited, it is found in several locations and is considered abundant in some sectors.

Baie Creuse (north-east part of Newton Bay)

There is some Eurasian Watermilfoil, particularly in the narrower channel.



Image source: Screen shot of page 3 from the original study completed by COBALI

Bowman sector

Eurasian Watermilfoil is scattered in the south-east extremity and slightly to the west of the public launch.

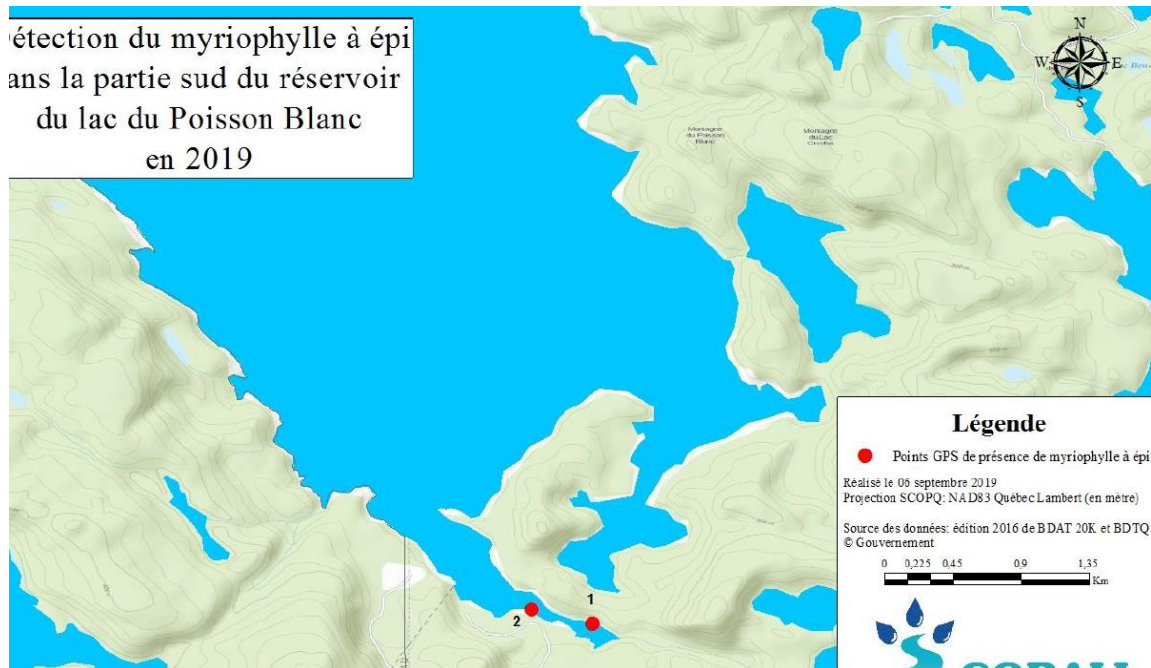


Image source: Screen shot of page 4 from the original study completed by COBALI

Newton Bay sector

Generally speaking, Eurasian Watermilfoil is well established in various parts of Newton Bay. There are colonies of various sizes and density. For specific locations of the invasive plant, please see page 6 of the original document.

**Please note that this study aimed at locating infested zones. The absence of dots on the map does not mean there is no milfoil.*

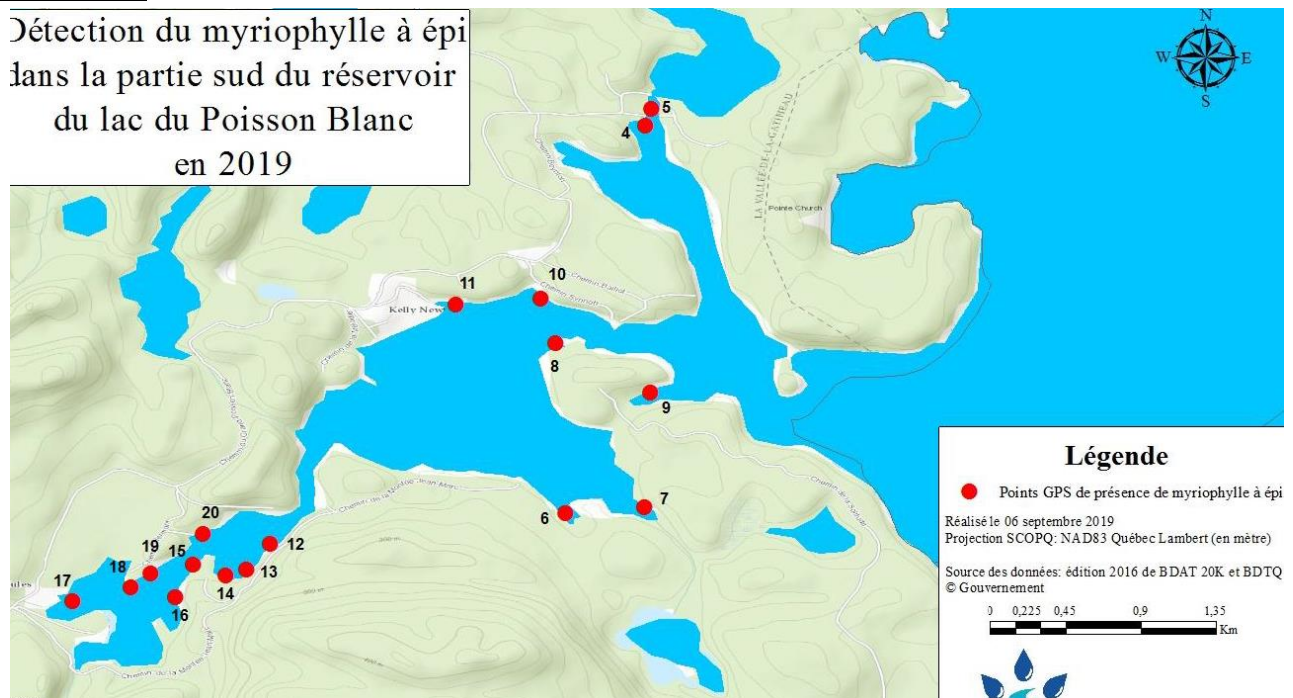


Image source: Screen shot of page 6 from the original study completed by COBALI

Recommendations

Given the fact that Eurasian Watermilfoil is well established in Lac Poisson Blanc, some actions can be undertaken to protect this lake and those neighbouring it.

- Raise awareness;
- Inspection and cleaning of crafts;
- Avoid circulation in infested areas (all it takes is a 1 cm long fragment to start a new colony) and install buoys;
- Limit nutrients in the lake (maintain shorelines and ensure septic system complies with regulation)